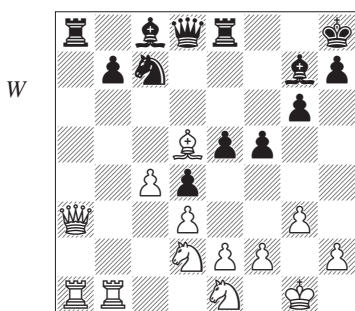


# Contents

Symbols	4
Foreword	5
Introduction	6
1 The Intuition of Mikhail Tal	10
2 Simple Intuitive Decisions	22
3 Combinative Intuitive Decisions	29
4 Intuitive Positional Decisions: Introduction	47
5 Exchange Sacrifices	49
6 Piece Sacrifices for Two Pawns	66
7 Queen Sacrifices	70
8 Pawn Sacrifices	74
9 Exchanging as an Intuitive Decision	86
10 Which Rook?	94
11 Mysterious Quiet Moves	100
12 Improving the Worst-Placed Piece	103
13 Analysis, Intuition and Mistakes in Judgement	108
14 Intuition and Risk	119
15 Intuition in the Endgame	124
16 Psychological Factors	134
17 Intuition in the Opening	149
18 Suetin on Intuition	155
19 Test Your Intuition	167
Solutions	171
Index of Players	174
Index of Openings	176



**Larsen – Chandler**  
*Hastings 1987/8*

**1 ♖xa8! ♜xa8 2 ♜xa8 ♙h6**

In order to generate some sort of counterplay.

**3 ♞df3 ♚e7 4 ♙xb7 ♙d7**

After the exchange of bishops, White has the simple plan of advancing the c4-pawn.

**5 ♜xe8+ ♙xe8 6 ♙d5!**

Controlling the maximum amount of squares.

**6... ♚d6 7 ♜b7**

The prophylactic 7 h4 also deserves attention.

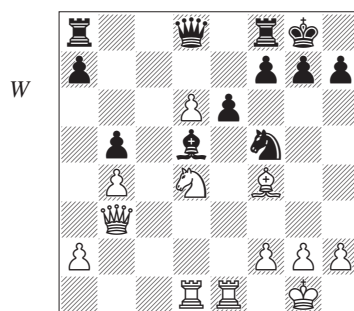
**7...g5 8 h4! gxh4 9 ♞xh4 ♙d7 10 ♞ef3 f4 11 ♙e4 fxg3 12 fxg3 ♙e3+ 13 ♙g2 ♙g4 14 ♜xh7+ ♙g8 15 ♜b7**

Black can safely resign – the threat of ♞g6 followed by ♙d5+ wins.

In the following position, White decided to invest some material in order to activate his pieces.

**1 ♜xd5!**

Sakaev thought that 1 ♜b2 was harmless since after 1... ♞xd6 2 ♙xd6 ♜xd6 3 ♞xb5 ♜c6 4 ♞d4 ♜b7 Black



**Sakaev – Rublevsky**  
*Russian Ch (St Petersburg) 1998*

has no problems. Changing the material balance of the position leads to an alteration in the style of play, but not, apparently, to the evaluation of the position.

**1...exd5 2 ♞xf5 ♜e8?!**

Straightaway an inaccuracy. Black should prefer 2... ♚d7! 3 ♜xd5 f6 4 h3 (4 ♜e7 is bad owing to 4... ♜fe8!) 4... ♜fe8 5 ♞e7+! ♙f7 6 ♜c5! and even though ♜c7 is not threatened immediately, Black's position is not easy to play.

**3 ♞e7+ ♙f8?**

Better is 3... ♙h8 4 ♜xd5 ♚d7 although after 5 h3 and 6 ♜c5 Black's position is unenviable.

**4 ♜xd5 ♚d7 5 h3 a6 6 ♜h5!**

This is White's idea.

**6...f6**

Not 6...h6? because of 7 ♜xh6!! gxh6 8 ♙xh6#.

**7 ♜xh7 ♜ad8 8 ♜e3 ♜c8 9 ♞xc8 ♙g8 10 ♞b6 ♚d8 11 ♜xe8+ ♜xe8 12 d7 ♚d8 13 ♜h5 g5 14 ♙e3 ♙g7 15 h4! ♙g6 16 ♜xg5+! 1-0**