

Contents

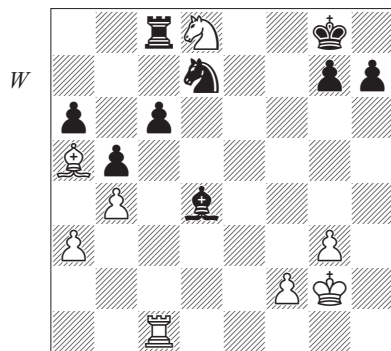
Symbols	4
Introduction	5
Part 1: The Elements	
Knight Forks	7
Loose Pieces	12
Opening and Closing Lines	17
Pins	22
Skewers	27
Overloaded Pieces and Deflections	31
Mating Attacks	36
The Back Rank	44
Stalemate	48
Pawn Promotion	52
Part 2: Tactics in Practice	
Finger Exercises	57
Mixed Bag	70
Tougher Examples	83
Solutions	94

Part 2: Tactics in Practice

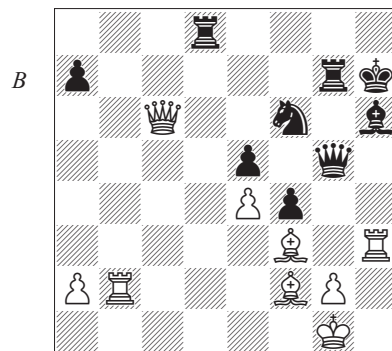
Finger Exercises

This section comprises 48 positions, in which the main task is to see the combinative blow that is available. Often during a game you will have an idea but then wonder whether it works. Here once you do find it then the resultant play is generally extremely clear.

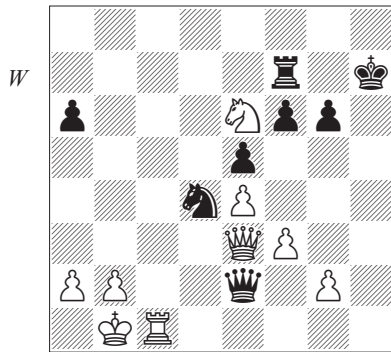
The examples therefore are short and quite 'simple'. However, having the vision is an absolutely essential precursor to tactical mastery.



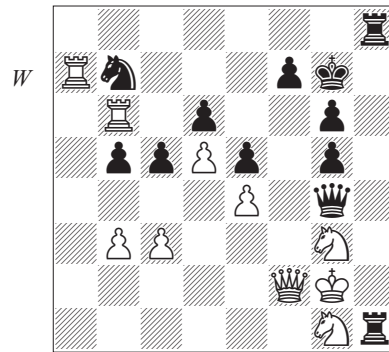
FE01 White to play
There is an obvious skewer but does it lead to anything?
(Solution: see page 121)



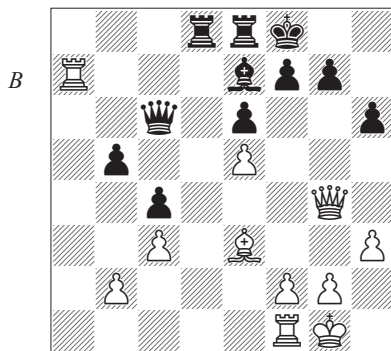
FE02 Black to play
(Solution: see page 122)



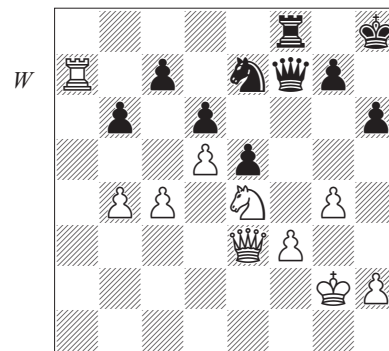
FE03 White to play
 Black has just tried 34...♔g7-h7?
 (34...♔g8 was a better chance). What
 came next?
 (Solution: see page 122)



FE05 White to play
 (Solution: see page 122)



FE04 Black to play
 Black attempted to free himself
 with 24...♔c5. Why was this not a
 good idea?
 (Solution: see page 122)



FE06 White to play
 What should White not do, and
 why?
 (Solution: see page 122)

♖e4! and Black resigned in view of 37...♗xa5 38 ♖e8#.

FE02

**Donaldson Akhmylovskaya –
Wang Pin**

China – USA, Shanghai 2002

Black played 41...♖d1+ 42 ♖h2 and now not 42...♗g4+?? 43 ♙xg4 ♖xg4 44 ♖xh6+ but 42...♖xg2+! and White resigned in view of 43 ♙xg2 ♗g4#.

FE03

Spassky – Korchnoi

Candidates match (7), Kiev 1968

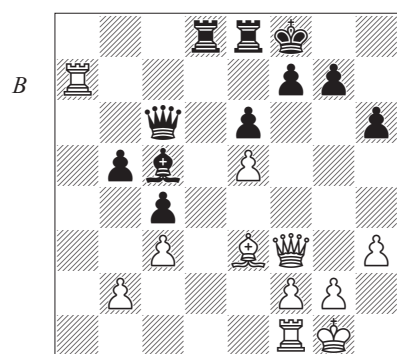
After 35 ♖h6+! Black resigned due to 35...♖xh6 36 ♖h1# or 35...♖g8 36 ♖c8+ ♖f8 37 ♖xf8#.

FE04

Eingorn – Van Wely

European Clubs Cup, Kallithea 2002

After 24...♙c5?, 25 ♖f3! (D) won on the spot.



25...♖xf3 is met by the *zwischenzug* 26 ♙xc5+.

FE05

Hort – Radulski

Hoogeveen 2002

Such is the tension here that there is really only one move to consider: 39 ♖xf7+!. Depending on the exact position this could win, draw by perpetual, or indeed lose, but in this case White wins: 39...♖xf7 (if 39...♖h6, then 40 ♖xh1 ♖xg3 41 ♖a2, etc.) 40 ♖xb7+ ♖f6 41 ♖f7#.

FE06

Salman – Molander

Curaçao 2002

The one move White mustn't play is 37 ♖xc7??. He did so and after the discovered attack 37...♗xd5! 38 ♖xf7 and the intermediate checks 38...♗xe3+ 39 ♖f2 ♗xg4+ 40 ♖g3 Black calmly recaptured 40...♖xf7 with a dead won game.

FE07

Hebden – Laubsch

Hastings Challengers 2002/3

After 27...♙c2?, 28 ♙xf7+! won a vital pawn: 28...♖xf7 (28...♖xf7 29 ♖xc2 ♖ad8 looks a bit better – but not 29...♖xa2? 30 ♖c7 with a winning attack) 29 ♖c7+ ♙e7 30 ♖xc2 and White had a huge advantage. In fact he won in just four more moves: 30...♖ac8 31 ♖f4+ ♖g8 32 ♖xc8 ♖xc8 33 ♖e5 ♖d8? 34 ♖xe7 1-0.

FE08

Timman – Topalov

Wijk aan Zee 2003