

Contents

Introduction	5
Algebraic Notation	6
How to Study Tactics	8

The 50 Tricky Tactics

1) Forks	14
2) Knight Forks	16
3) Queen Forks	18
4) Pins (1)	20
5) Pins (2)	22
6) The Skewer	24
7) Decoy Sacrifices	26
8) Deflections	28
9) Overload	30
10) Discovered Attack	32
11) Discovered Check	34
12) Double Check	36
13) The ♖c8 and ♘e7+ Trick	38
14) The ♙xf7+ and ♘g5+ Trick	40
15) The Cunning Caro-Kann Trap	42
16) The ♙xf7+ and ♘e5+ Trick	44
17) Pinning the Queen (1)	46
18) Pinning the Queen (2)	48
19) The Zwischenzug	50
20) More Knight Forks	52
21) The King and the Knight Fork	54
22) The ♙xh7+ Queen Fork	56
23) Clearance Sacrifices	58
24) Desperado Sacrifices	60
25) Stalemates	62
26) Rook Endgame Stalemates	64
27) The Rampant Rook	66
28) The Kamikaze Queen	68

29) Kamikaze Queen <i>and</i> Rampant Rook	70
30) The ♖g5 & ♜xb7 Trap	72
31) The Deadly d-File Discovery	74
32) The Old ♘d5 Trick (1)	76
33) The Old ♘d5 Trick (2)	78
34) The Old ♘d5 Trick (3)	80
35) The Rook Endgame Skewer	82
36) Perpetual Checks	84
37) The ♖g5-f6 Perpetual	86
38) The ♘h6-f7 Perpetual	88
39) The ♜b5 & ♘c7+ Crusher (1)	90
40) The ♜b5 & ♘c7+ Crusher (2)	92
41) Queen Sacrifice & Knight Fork (1)	94
42) Queen Sacrifice & Knight Fork (2)	96
43) Queen Sacrifice & Knight Fork (3)	98
44) The ♜h6 and ♘f6+ Combo	100
45) An 'Elastic Band' Trap	102
46) The ...♘e4 Zwischenzug	104
47) Breaking the Pin with ...♘e4 (1)	106
48) Breaking the Pin with ...♘e4 (2)	108
49) The ♜c7 Queen Trap	110
50) Far-Advanced Pawns	112
Test Your Motif Recognition	114
Test Your Tactics	116
Test Solutions	126



DEFLECTION

TRICKY TACTIC 13

The ♖c8 and ♞e7+ Trick

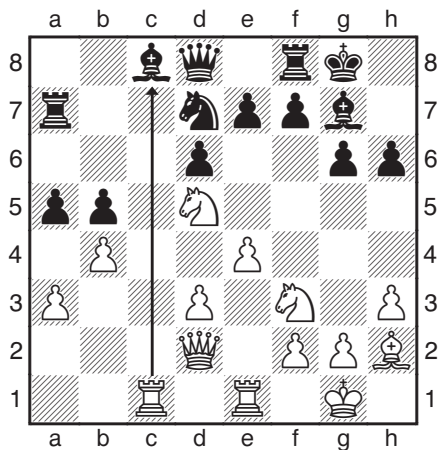
The lady-killer

This combination often wins a queen. It features a rook decoy sacrifice on the c8-square, followed up by a knight fork on the e7-square. The fork of the black king and queen exploits a common formation of pieces, as, following kingside castling, the black king is naturally located on the g8-square.

The ingredients to watch out for are the following:

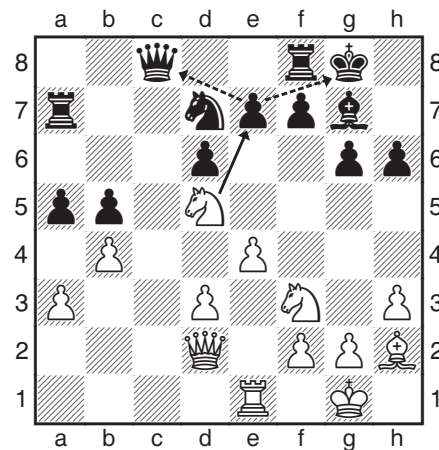
- 1) a white knight on d5 and a white rook on the open c-file;
- 2) the black queen on d8 and the black king on g8;
- 3) Black's e7-square is undefended (except by the black queen).

Typical Pattern for the ♖xc8 and ♞e7+ Decoy



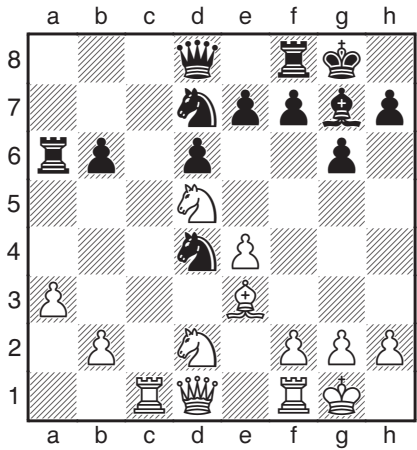
1a) White moves

First comes the rook sacrifice to decoy the black queen to the c8-square: 1 ♖xc8 ♜xc8 (1b).



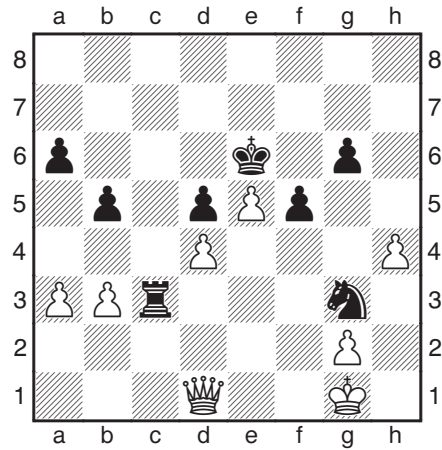
1b) White moves

The follow-up 2 ♞e7+ is a knight fork of the black king and queen. After 2...♔h8 3 ♞xc8 White wins.



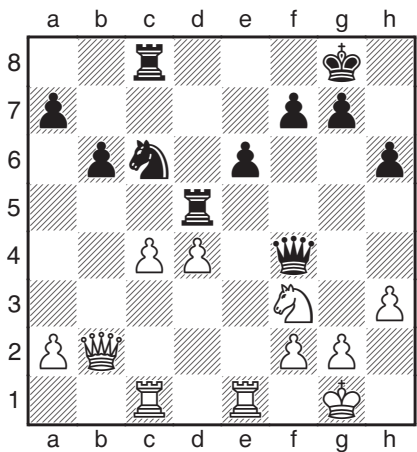
2) White moves

It is not essential to capture anything on c8. 1 ♖c8 ♔xc8 2 ♘e7+ wins the black queen for rook and knight.



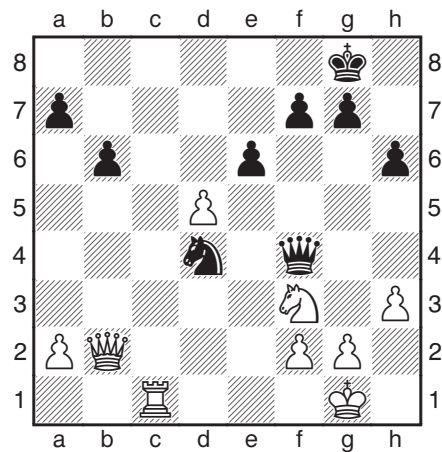
3) Black moves

The knight can start on a different square (in this case g3 rather than d4), but the principle is the same: 1... ♖c1! 2 ♔xc1 ♘e2+ winning.



4a) Black moves

A classy example. Ignoring the fact that his rook is attacked by a pawn, Black plays 1... ♘d4! 2 cxd5 ♖xc1 3 ♖xc1 (4b).



4b) Black moves

The sacrificed material is neatly regained with 3... ♔xc1+ 4 ♔xc1 ♘e2+ 5 ♔f1 ♘xc1. Black emerges a pawn up in the endgame.