

Contents

Symbols

Introduction

Dedication, Acknowledgements and Bibliography

1 Elementary Puzzles

Solutions for Elementary Puzzles

Elementary Test

Solutions for Elementary Test

2 Checkmate Puzzles

Solutions for Checkmate Puzzles

Checkmate Test

Solutions for Checkmate Test

3 Intermediate Puzzles

Solutions for Intermediate Puzzles

Intermediate Test

Solutions for Intermediate Test

4 Forks, Pins and Loose Pieces Puzzles

Solutions for Forks, Pins and Loose Pieces Puzzles

Forks, Pins and Loose Pieces Test

Solutions for Forks, Pins and Loose Pieces Test

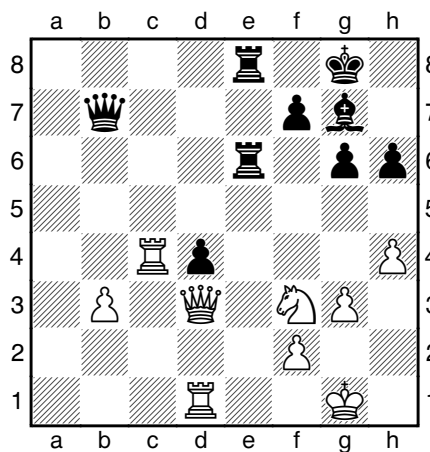
5 Advanced Puzzles

Solutions for Advanced Puzzles

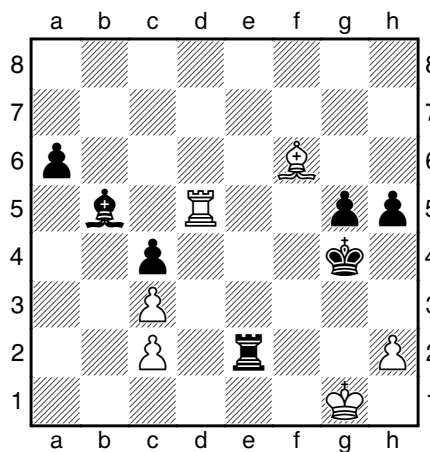
6 Deadly Puzzles

Solutions for Deadly Puzzles

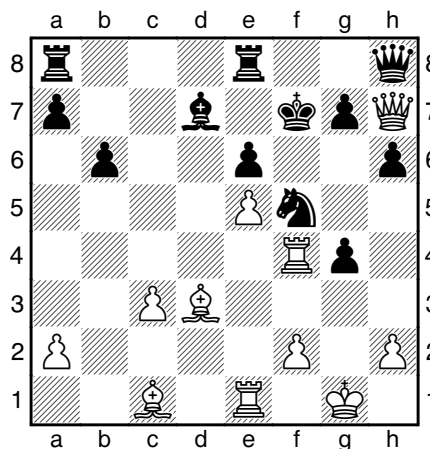
Index of Players



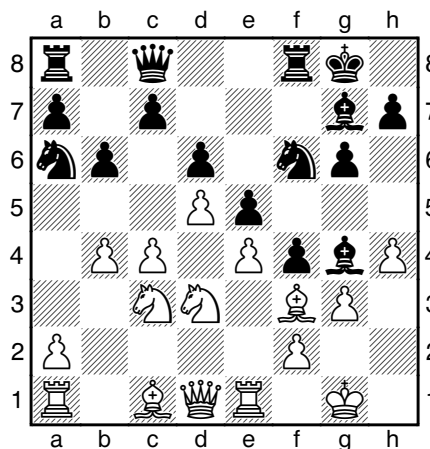
360) Black to play



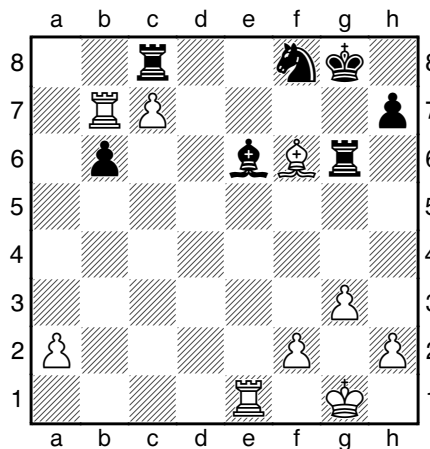
363) Black to play



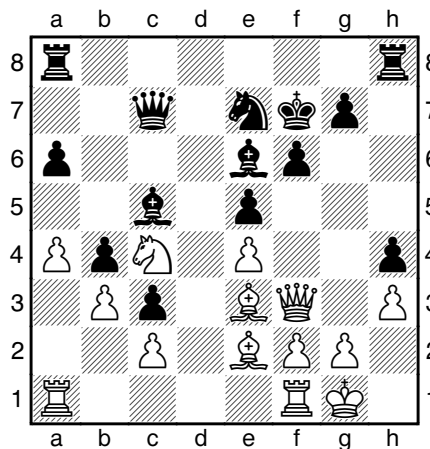
361) White to play



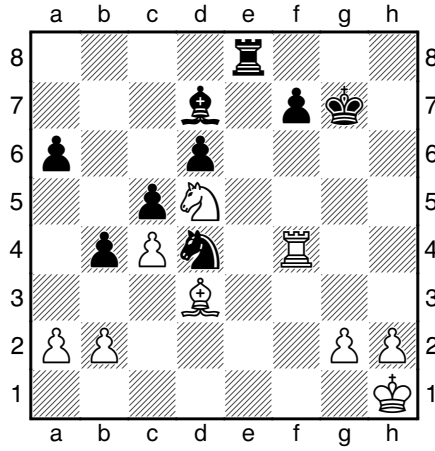
364) Black to play



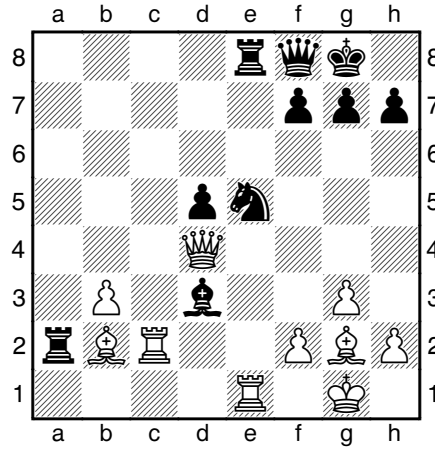
362) White to play



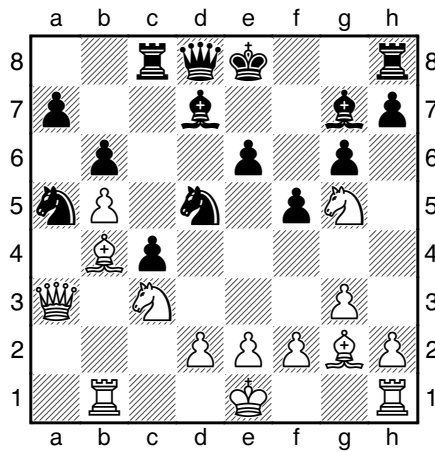
365) White to play



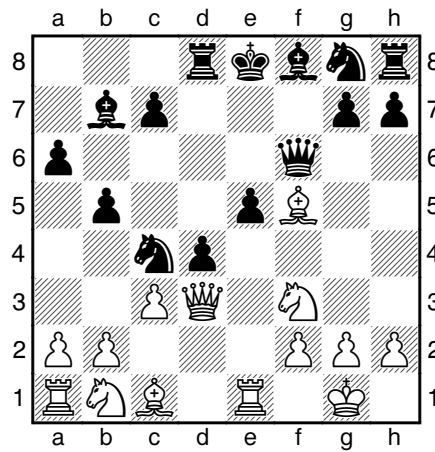
366) Black to play



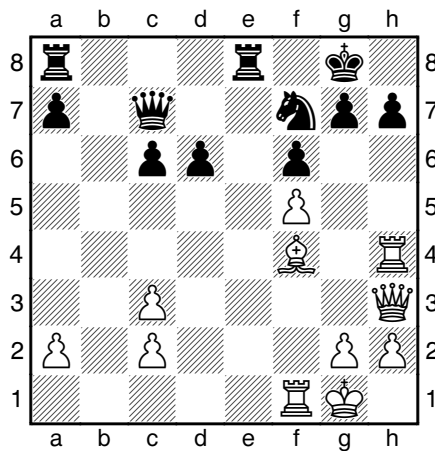
369) White to play



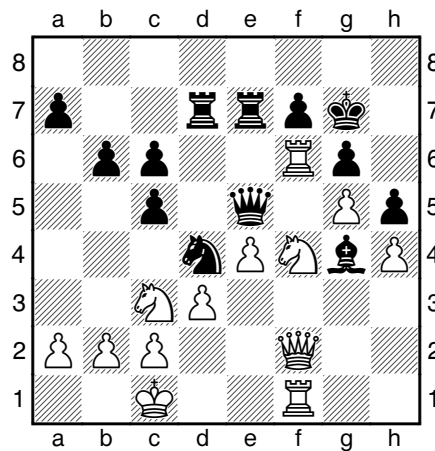
367) White to play



370) White to play



368) Black to play



371) White to play

359) Pranav – M. Pranesh*Delhi 2022***23...♙xc2+! 24 ♖b2**

24 ♜xc2 ♜xf4 –+.

24...♜xe2! 25 ♜xe2

25 ♜xe2 ♗c4+ –+.

25...♗c4+

Also sufficient is 25...♙xb3 26 axb3 ♜xf4 –+ (as played in the game) since Black's knights are much stronger than the white rook.

26 ♖xc2 ♗xd6 27 ♙xd6 ♜xa2+ 28 ♖c1 ♜xb3 –+

360) Sumets – Jarmula*Malaga 2022***34...♜e3! 35 fxe3 ♜xe3 36 ♗xd4?**

36 ♜f1? ♜xf3 –+. White's best try is 36 ♗e1 ♜xd3 37 ♜xd3, though the endgame after 37...♜e4 38 ♖f2 f5 is unpleasant for White.

36...♜xd3 37 ♜xd3 ♜e4 38 ♜d1 ♜e3+ 39 ♖f1 ♜xg3 –+

361) Shyam – M. Pranesh*Commonwealth Ch, Waskaduwa 2022***27 ♜xf5+! exf5 28 ♙c4+ ♖e7 29 ♜g6**

The black queen is stuck in the corner and is unable to assist.

29...♗d8 30 e6 +–**362) Schitco – Escalante Ramirez***Charlotte 2022***35 ♜xe6! ♖f7**

35...♜xc7 36 ♜xc7 ♗xe6 37 ♜c8+ ♖f7 38 ♙e5 +–.

36 ♜d6 ♜xf6 37 ♜d8 1-0**363) Mitsis – Moutousis***Greek Ch, Athens 2022***41...♖f4**

The key point is to avoid 41...♜g2+?? (as played in the game), when White wins a rook:

42 ♖xg2 ♙c6 43 h3+ (Black resigned here)

43...♖f4 (43...♖h4 44 ♙xg5#) 44 ♙xg5+ ♖e4 45 ♜c5 +–.

42 ♜xg5

42 ♙xg5+?! ♖f3 43 ♜f5+ ♖g4 44 ♜d5 ♜xc2 favours Black.

42...♜e6 43 ♙d8 ♜e1+ 44 ♖f2 ♜c1 45 ♜xh5 ♜xc2+ 46 ♖e1 ♜xc3

Black has an extra pawn but White has reasonable drawing chances thanks to the opposite-coloured bishops.

364) N. Zemach – Tzidkiya*Israeli Ch, Arad 2022***20...fxg3 21 ♙xg4**

After 21 fxg3 ♙xf3 22 ♜xf3 ♗xd5 Black wins material.

21...♜xg4 22 ♜xg4 ♗xg4 23 ♖g2

23 fxg3 ♜f3 24 ♜d1 ♜xg3+ –+.

23...♗xf2 24 ♜e3 ♗xd3 0-1**365) Ad. Kozak – A. Horvath***Hungarian Ch, Budapest 2022***22 ♗xe5+! ♜xe5**

22...♖f8 23 ♙xc5 ♜xc5 24 ♗d3 also wins for White.

23 ♙f4 ♜d4 24 ♜ad1 +–**366) M.S. Hansen – Vasli***Danish Team Ch 2022/3***30...♙f5!**

Black exploits White's weak back rank.

31 ♙f1 ♜e1 32 ♖g1 ♙d3 33 b3

33 ♜g4+ ♖f8 –+.

33...♗e2+ 34 ♖f2 ♜xf1+ 0-1**367) Sanal – Krastev***Sitges 2022***17 ♗xd5 ♜xg5**

The game ended 17...exd5? 18 ♜e3+ (forcing mate) 1-0.

18 h4 ♜d8

18...♜h6 19 ♗e7 ♜d8 20 ♗c6 +–.

19 ♙e7 ♙f8 20 ♜c3 ♙xe7 21 ♜xh8+ ♙f8**22 ♗f6+ ♖f7 23 ♗xd7 ♜xd7 24 ♜xh7+ ♙g7****25 h5 +–****368) Espinosa Veloz – C. Rios***Merida 2022*

21...♜b6+ 22 ♖h1 ♜f2! 23 g4 ♜e1 24 ♜xe1 ♜xe1+ 25 ♖g2 ♜e8 0-1

369) Moroni – Maltsevskaya*European Rapid Ch, Katowice 2022***23 ♜xe5! ♜xe5 24 ♜xd3 ♜e1+ 25 ♙f1 ♜a8**

The game ended 25...♜a8 26 ♜c3 1-0.

26 ♖g2 ♜d8 27 ♙e2 d4 28 ♙f3 +–

370) Aveskulov – Krishnater*Budapest 2022***14 ♖g5! dxc3 15 ♜xf6**

15 ♜xe5 ♜xd3 16 ♜xf6 transposes.

15...♜xd3 16 ♜xe5 gxf6

16...♜xf6 17 ♜xd3+ ♜d8 18 ♜xc3 is winning for White.

17 ♜xd3+ ♜e7 18 ♜xc3 ♜d6 19 ♜e6 1-0**371) Mazé – Harff***Bundesliga 2021/2***27 ♜xg6+! fxc6 28 ♜xh5+ ♜h7**

28...gxh5 29 ♜f8+ ♜h7 30 ♜h6+ ♜g8 31 ♜f8#.

29 ♜f6+

Or 29 ♜f8 ♜g7 30 ♜f6+ ♜xf6 31 ♜xf6 and White wins.

29...♜h8 30 ♜xd7 1-0

In view of 30...♜g7 31 ♜f6 ♜f7 32 ♜f4 +- or 30...♜xd7 31 ♜f8+ ♜h7 32 ♜h6+ ♜g8 33 ♜f8#.

372) I. Grigoriev – D. Shapiro*Obninsk 2022***15...♜xe5! 16 dxe5**

16 ♜f4 ♜c4 +-.

16...♜xe5 17 ♜a4

17 ♜a3 ♜xb1 +-.

17...♜f6 0-1**373) Tregubov – Dubov***Internet rapid 2022***21...c5! 22 ♜xf4**

Black has a decisive material advantage after 22 ♜xf5 ♜e2+ 23 ♜h1 ♜xg3+ 24 ♜xg3 ♜g4 +-.

22...cxd4 23 ♜g5

23 ♜d2 dxc3 24 ♜xc3 ♜c6 25 ♜xg6 d4 26 e6 ♜e7 27 ♜d2 ♜e5 28 ♜g3 ♜xe6 +-.

23...dxc3 24 bxc3 ♜c6 25 ♜e1 ♜e6 +-**374) Vidit – Salem***Internet rapid 2022***42 g6! ♜xd4 43 ♜g1!**

43 exd4 (as played in the game) wins in slower fashion: 43...♜xf7 (the best try) 44 exf7! ♜xg6 45 ♜e5+ ♜g7 and now 46 h4! +- puts Black in zugzwang.

43...♜xg6 44 ♜xd6 +-**375) Vokhidov – Grishchuk***Internet rapid 2022***19 ♜f4! ♜f3+ 20 ♜h1 ♜xf7 21 ♜xe6+ ♜b8**

21...♜c6 22 ♜e2 ♜d7 23 ♜xf8+ ♜e8 24 ♜e6 +-.

22 ♜xd5 ♜b4 23 gxf3 ♜a6 24 ♜c5 1-0**376) I. Can – Martin Duque***Purtichju 2022***22 ♜b5! ♜f5**

22...♜b7 23 ♜xa6 +-.

23 a3 ♜f4 24 ♜xb8+ ♜g7 25 ♜a7 ♜xb1

The game ended 25...♜e8 26 ♜c7 1-0.

26 ♜xb1 ♜xe5 27 ♜d4 +-**377) P. Cramling – L. Carlsson***Swedish Ch, Uppsala 2022***17...♜xc5!**

Black relieves the pressure on his queenside. The game ended with 17...♜c8?? 18 ♜xe6! (or 18 ♜a6! +-) and Black resigned in view of 18...♜xe6 19 ♜xc6+ ♜xc6 20 ♜xc6+ ♜f8 21 ♜xa8 +-.

18 ♜xc5 ♜b6 19 ♜e5

19 ♜d6 ♜d8 =.

19...0-0 =

The chances are roughly equal as White has sufficient compensation for the missing pawn.

378) Sebenik – Brilej*Slovenian Ch, Radenci 2022***12 ♜xd7 ♜xd7**

The game ended 12...♜xd7 13 ♜xc6 bxc6 14 ♜b8+ 1-0 (in view of 14...♜d8 15 ♜xd8+ ♜xd8 16 ♜xe4+, winning the black queen).

13 ♜xc6 bxc6 14 ♜xe4 ♜g7

14...♜c4 15 ♜e1 +-.

15 ♜c7 ♜c8 16 ♜d6+ exd6 17 ♜e1+ ♜e5 18 cxd6 +-**379) Aravindh – Peralta***Benasque 2022***26...♜b4!**

After 26...♜f6? (as played in the game) White could have sacrificed the exchange to obtain a playable game: 27 ♜xf6+! ♜xf6 28 ♜f3+ ♜f5 29 g4 ♜c6 30 gxf5 ♜xf5 31 ♜g3 with roughly equal chances due to Black's vulnerable king.