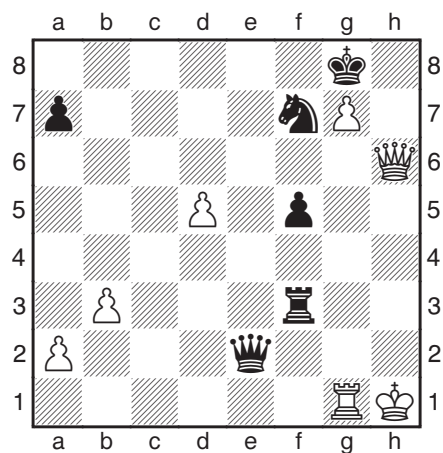


# Contents

Symbols and Notation	4
Preface by Murray Chandler	5
Introduction	6
1 Elementary Mates	8
Solutions	24
2 Back-Rank Mates	31
Solutions	41
3 Mate in the Endgame	46
Solutions	62
4 The Lethal Long Diagonal	71
Solutions	78
5 Pawn-Promotion Mates	82
Solutions	88
6 Mates with Rook and Minor Piece	92
Solutions	102
7 Deadly Doubled Rooks	107
Solutions	113
8 Destroying the Defences	117
Solutions	126
9 Death on the Rook's File	131
Solutions	140
10 Queen Sacrifices	146
Solutions	162
11 Mate by Line-Opening	170
Solutions	179
12 Mate by Blocking Squares	184
Solutions	189
13 Mate Involving Discovered or Double Check	192
Solutions	208
14 Hunting the King	217
Solutions	221
15 Miscellaneous Mates	224
Solutions	248
16 Mate Revision Test	261
Solutions	272
17 Extreme Mate Challenge	278
Solutions	288
Final Score-Chart	296
Index of Players	297

## 5 Pawn-Promotion Mates

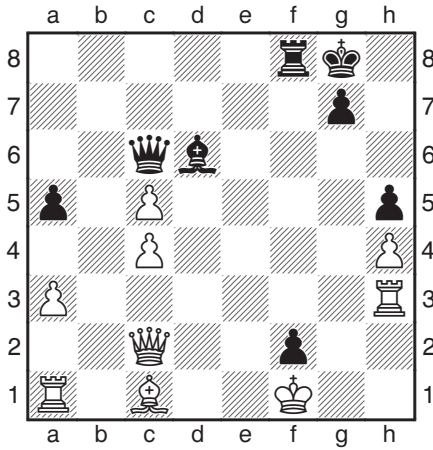
Having a pawn near the enemy king can be the foundation for a possible mate; for example, a pawn on f6 can support a mate by the queen on g7. In this case the pawn plays a supporting role in helping another piece to deliver mate, but sometimes a pawn can be the star of the show itself.



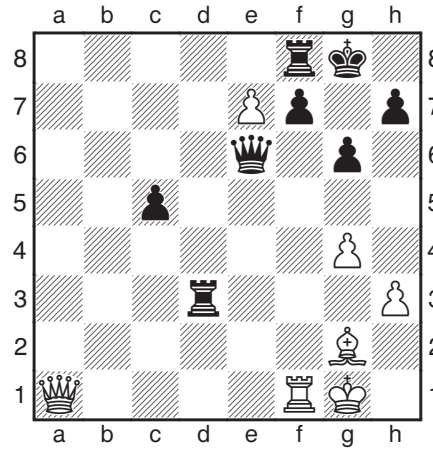
**Krasenkow – Bobras**  
*Polish Team Ch, Glogow 2001*

Here White won prettily with the queen sacrifice **1 ♕h7+!** and **Black resigned (1-0)**. The clever point is that after **1... ♖xh7** the white pawn on g7 is able to promote, and its resurrection to a new queen makes a quick checkmate possible: **2 ♖g8+ ♔h6 3 ♕g6#**.

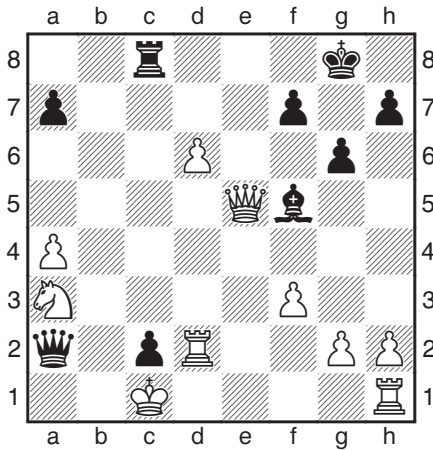
You will soon learn to spot this classic sacrificial theme – and other pawn-promotion opportunities – as you work your way through the puzzles in this chapter. The power of a far-advanced pawn can be truly remarkable and if you have one near the enemy king, then sacrifices to force checkmate are often in the air.



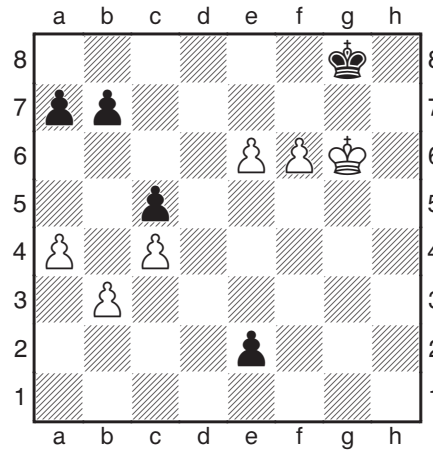
271) Black to play (1 point)



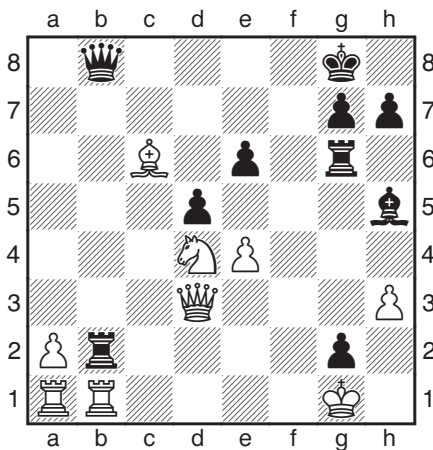
274) White to play (1 point)



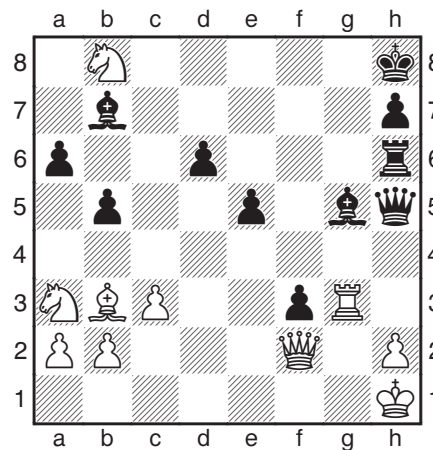
272) Black to play (1 point)



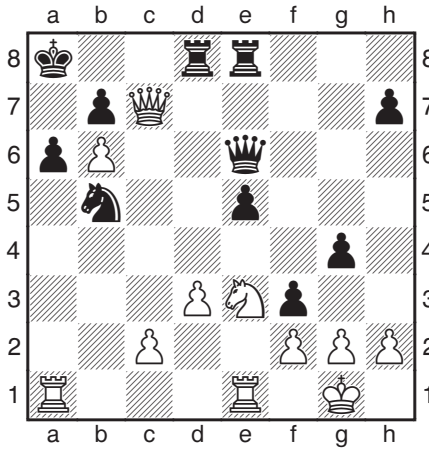
275) White to play (2 points)



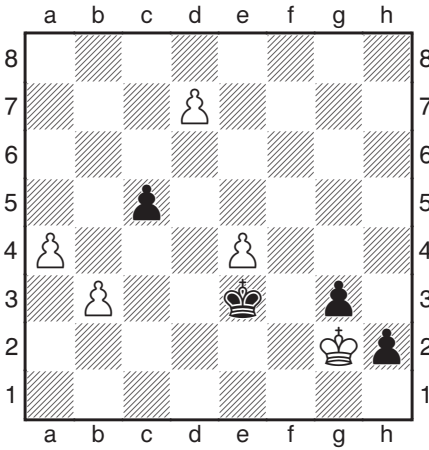
273) Black to play (1 point)



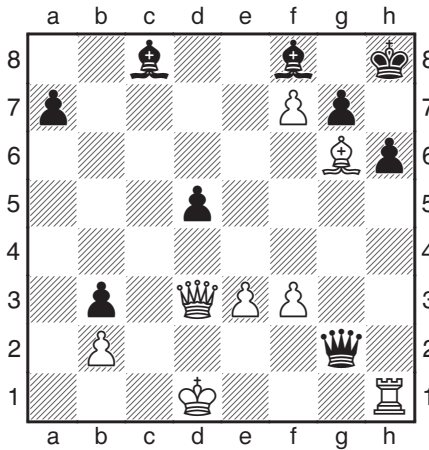
276) Black to play (2 points)



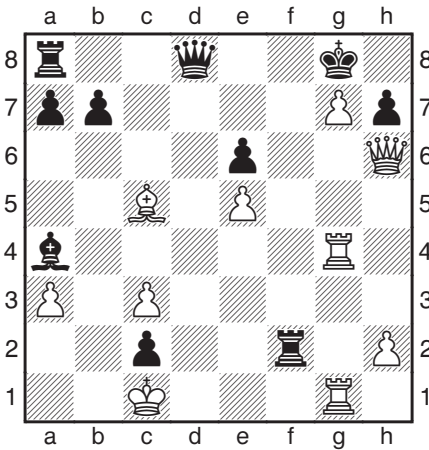
277) White to play (2 points)



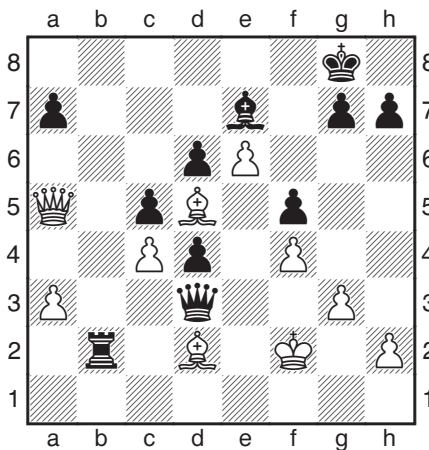
280) Black to play (3 points)



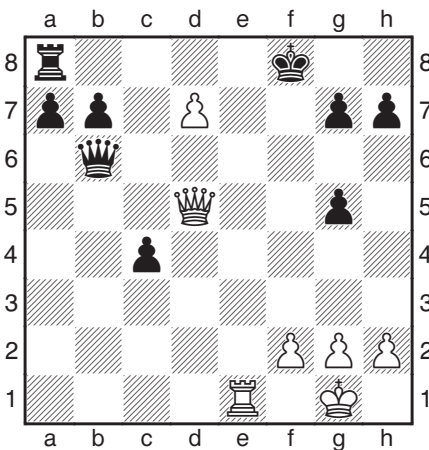
278) White to play (2 points)



281) White to play (3 points)



279) White to play (2 points)



282) White to play (3 points)

# Solutions for Pawn-Promotion Mates

271) I. Solonar – V. Ianocichin

*Kishinev 2001*

1... ♖g2+! 2 ♔xcg2

Or 2 ♔e2 f1 ♖++ 3 ♔e3 ♕xc5#.

2... f1 ♖#

This is a typical combination involving the removal of a blockading king by means of a sacrifice.

272) A. Glukhov – Vladis. Vasiliev

*Kazan 2009*

1... ♖b1+! 0-1

2 ♘xb1 cxb1 ♖#.

273) Moreto Quintana – Koziak

*La Roda 2007*

1... ♖h2+! 0-1

2 ♔xh2 g1 ♖#.

274) A. Tudor – Ta. Balla

*Romanian Under-16 Ch, Calimanesti 2000*

1 ♖h8+! 1-0

1... ♔xh8 2 exf8 ♖#.

275) Nguyen Chi Minh – P. Forthoffer

*Prague 2009*

1 e7!

1 f7+? ♔f8 2 ♔f6? doesn't work because

2... e1 ♖ stops the mate on e7.

1-0

1... e1 ♖ 2 f7+ ♔h8 3 f8 ♖#.

276) Estevez Jacome – Bernal Tinajero

*Asturias 1992*

1... ♖xh2+! 2 ♖xh2 f2+ 0-1

After 3 ♖g2 f1 ♖# neither rook nor queen can interpose as both are pinned.

277) J. Antal – Gal

*Hungarian Team Ch 2006/7*

1 ♖xa6+! bxa6 2 b7+ 1-0

2... ♔a7 3 b8 ♖#.

278) Vigorito – E. Lund

*Budapest 2003*

1 ♖xh6+! gxh6 2 ♖d4+

2 ♖c3+ also mates but takes one move longer.

2... ♕g7 3 f8 ♖#

Promoting to a queen is equally effective.

279) R. Taborsky – T. Vesely

*Tatranske Zruby 2002*

1 ♖d8+! 1-0

1... ♕xd8 (after 1... ♕f8 2 e7+ White mates next move) 2 e7+ ♔h8 3 e8 ♖# (or 3 exd8 ♖#).

280) S. Foisor – Li Shilong

*Cappelle la Grande 2008*

1... h1 ♖+! 2 ♔xh1 ♔f2 0-1

3 d8 ♖ g2+ 4 ♔h2 g1 ♖+ 5 ♔h3 ♖g3#.

281) Bobras – Szelag

*Polish Ch, Poznan 2005*

1 ♖xh7+! ♔xh7 2 g8 ♖+!

White cannot play 2 ♖h4+ at once as Black can reply 2... ♖xh4.

2... ♖xg8

2... ♔h6 3 ♖g6#.

3 ♖h4#

282) Marcelin – Gschnitzer

*2nd Bundesliga 2002/3*

1 ♖e8+! ♖xe8 2 ♖g8+! ♔xg8

2... ♔e7 3 dxe8 ♖+ leads to mate in a few moves.

3 dxe8 ♖#

283) Zaragatski – So. Kartsev

*Dortmund 1999*

1 ♖g8+! ♔xg8 2 h7+ ♔f8

It's also mate after 2... ♔h8 3 ♖d8+ ♔g7 4 ♖g8# or 2... ♔g7 3 h8 ♖+ ♔g6 4 ♖h6#.

3 h8 ♖+ ♔e7 4 ♖d8+ 1-0

4... ♔e6 5 ♖d6#.