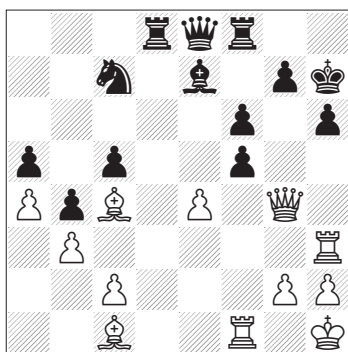


Contents

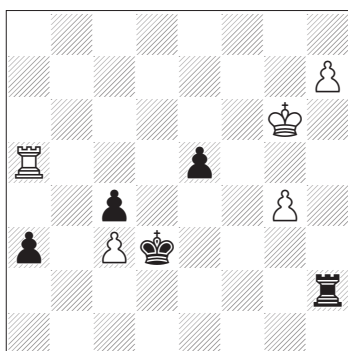
Introduction	4
Puzzles 1	7
Find the Wrong Move	34
Puzzles 2	39
The Test of Time	66
Test Positions	87
Hints	96
Solutions to Puzzles	110
Solutions to Test Positions	186
Score Table	207
Test score to Elo points conversion	208



Belotti – Razuvaev
Reggio Emilia 1996/7

33 White to play
Black has just played ...e6xf5 and the game now continued 1 exf5 ♖h8 2 ♕h4, eventually ending in a draw. How could White have won most forcefully?

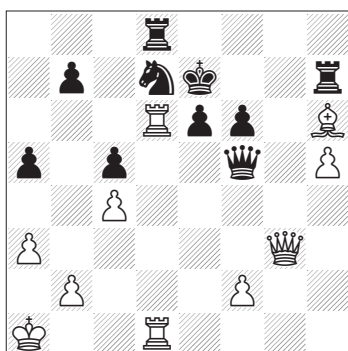
(Hint: see p.98; solution: see p.121)



Van Wely – Leko
Tilburg 1996

34 White to play
In this position, White's two connected passed pawns give him the advantage, especially if one takes into account the fact that the h-pawn is the most advanced pawn on the board. However, White has a tricky choice to make here: which of the two black pawns he is attacking should he capture? Leading Dutch grandmaster Loek van Wely failed to find the correct answer during the game.

(Hint: see p.98; solution: see p.121)



Djukić – Tomašević
Yugoslavia 1969

35 White to play
White has a number of promising attacking continuations, but how can he force immediate resignation?

(Hint: see p.98; solution: see p.121)

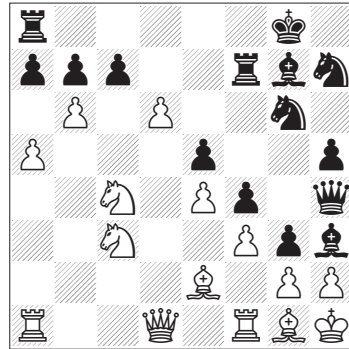
36 White to play

Black has just played ...♙c8-h3. He must continue vigorously because his position on the queenside and in the centre is on the verge of collapse, so a single wasted tempo would be enough to decide the game in White's favour. This is a two-part puzzle:

1) White played 1 bxc7. What happened next?

2) What should White have played instead?

(Hint: see p.98; solution: see p.121)

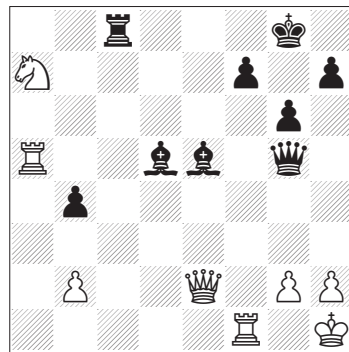


Ftačnik – Cvitan
Bundesliga 1997/8

37 Black to play

Black has already sacrificed the exchange, and his powerfully centralized bishops contrast sharply with the offside knight on a7. How did Black finish the game off?

(Hint: see p.98; solution: see p.122)

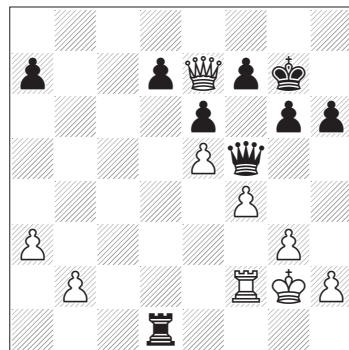


Larsen – Ljubojević
Milan 1975

38 Black to play

White's king is rather exposed, but it is hard for Black to make progress because of the potential perpetual check on f6 and d8. How should Black continue?

(Hint: see p.98; solution: see p.122)



Björnsson – Nunn
London (Lloyds Bank) 1994

Or 5...♙xb6 6 ♖d6 ♗e8 7 ♗g5 g6 8 ♜h6+ ♚g7 9 ♗f6+ ♚xh6 10 ♙c1+ and White mates next move.

6 bxc7 ♜xb2 7 ♖d6 ♗xc4 8 ♗g5 1-0

It is mate in a few moves.

Puzzle 33

The most forceful win is undoubtedly **1 ♗xg7+! ♚xg7 2 ♙xh6+ ♚h7** (2...♙g6 3 exf5+ mates in two more moves) **3 ♙xf8+ ♚g6 4 exf5+ ♚g5 5 ♙h6+ ♚g4 6 ♖f4#** (or 6 ♙e2#).

However, it must be added that even after 1 exf5 ♖h8, White can still win prosaically, for example 2 ♖e1 ♖d7 3 ♖he3 or 2 ♖g3 ♖g8 (2...♙f8 3 ♗g6+ ♗xg6 4 fxg6#) 3 ♖e1 with crushing pressure in either case.

Puzzle 34

First of all, here is the game continuation:

1 ♖xe5? ♖xh7!

A brilliant saving resource. It is highly counter-intuitive for Black to give up the rook before he really has to, but in this special case the natural alternatives fail tactically, so it is the only choice. Van Wely had only been counting on 1...a2 2 ♖a5 ♚xc3 3 ♖xa2 with an easy win. 1...♚xc3 is also bad since after 2 ♖h5 the h-pawn promotes with check.

2 ♚xh7 ♚xc3 3 ♖a5

Or:

1) 3 g5 a2 4 ♖a5 ♚b2 5 g6 a1 ♗6 ♖xa1 ♚xa1 7 g7 c3 8 g8 ♗c2.

2) 3 ♖e1 a2 4 g5 ♚b2 5 g6 a1 ♗6 ♖xa1 ♚xa1 7 g7 c3.

3) 3 ♖e2 ♚b3 4 g5 a2 5 ♖e1 ♚b2 6 g6 a1 ♗7 ♖xa1 ♚xa1 8 g7 c3 9 g8 ♗c2.

In every line Black's c-pawn reaches the seventh rank, ensuring the draw.

3...♚b2 4 g5 a2 5 g6 a1 ♗6 ♖xa1 ♚xa1 7 g7 c3 8 g8 ♗c2 1/2-1/2

Now let's look at the correct continuation **1 ♖xa3 e4 2 ♖a2!**. White, with gain of tempo, brings his rook to a position where it can be given up for Black's e-pawn. After **2...♖h4 3 g5 e3** (other moves are also too slow) **4 ♚g7 e2 5 ♖xe2 ♚xe2 6 h8 ♗xh8 7 ♚xh8 ♚d3 8 g6 ♚xc3 9 g7** White wins by one tempo.

Here the problem is seeing Black's saving resource after 1 ♖xe5?, because it appears that both moves win.

Puzzle 35

In the game White forced a quick win by:

1 ♗g8! e5

Or:

1) 1...b6 2 ♖xd7+ ♖xd7 3 ♗f8#.

2) 1...♖f7 2 ♖xd7+ ♖xd7 3 ♖xd7+ ♚xd7 4 ♗xf7+.

3) 1...♖xg8 2 ♖xd7+ ♚e8 3 ♖d8+ ♚f7 4 ♖1d7#.

2 ♙f8+

2 ♖xd7+ is equally good, for example 2...♗xd7 3 ♙f8+ ♖xf8 4 ♗xh7+ or 2...♖xd7 3 ♙f8+ ♚d8 4 ♙d6#.

1-0

Since 2...♖xf8 3 ♖xd7+ ♗xd7 4 ♗xh7+, 2...♜xf8 3 ♖xd8 and 2...♚e8 3 ♖xd7 are all dead lost.

Puzzle 36

The game continued **1 bxc7?** (White simply failed to notice Black's threat and stumbled into a beautiful forced mate in five) **1...♙xg2+!! 2 ♚xg2 ♗h3+ 3 ♚xh3 ♜g5+ 4 ♚g2 ♜h4+ 0-1.**

However, White actually has the advantage in the diagram position. His best line is **1 gxh3!** (not 1 $\text{d}e3$ $\text{fxe}3$ 2 $\text{d}d5$ $\text{d}f4$ 3 $\text{d}xe3$ $\text{d}xg2+$ 4 $\text{d}xg2$ $\text{w}h3$ 5 $\text{d}xf4$ $\text{exf}4$ 6 $\text{f}f2$ $\text{gxf}2$ 7 $\text{d}xf2$ $\text{d}xa1$ and Black wins) **1...wxb3** **2 fxf2 gxf2** **3 dxf2 axb6** **4 d5!** (4 $\text{dxc}7$ $\text{fxc}7$ 5 $\text{d}xb6$ $\text{ff}8$ 6 $\text{d}b5$ $\text{f}c6$ 7 $\text{d}a7$ $\text{d}h4$ is less clear) **4...cxd6** (4... $\text{bxa}5$ 5 $\text{dxc}7$ is also very good for White) **5 dxd6** with serious problems for Black, e.g. 5... $\text{ff}8$ (or 5... $\text{f}xa5$ 6 $\text{f}xa5$ $\text{bxa}5$ 7 $\text{d}xf7$ $\text{d}xf7$ 8 $\text{d}c4$) 6 $\text{d}xb6$ $\text{fad}8$ 7 $\text{w}b3+$ $\text{d}h8$ 8 $\text{d}f1$ and wins.

Puzzle 37

1...w4! leads to a quick mate against any defence. The finish was **2 wxe5 wf2! 0-1**. White cannot take any of the *en prise* pieces, and otherwise the three different mates in one are too much to cope with.

Puzzle 38

The game continued:

1...d5!

An extremely strong move. If White does not take on d6, then Black will simply advance his new passed pawn. If White does take, then the perpetual check on d8 and f6 has vanished.

2 exd6

Of course, White now has a potential second queen, but it turns out that Black's attack arrives before White can promote. Note that 2 $\text{w}xa7$ loses to 2... $\text{w}e4+$ 3 $\text{d}h3$ $\text{f}g1$ 4 $\text{d}g4$ $\text{h}5+$ 5 $\text{d}h4$ $\text{w}f5$.

2...we4+ 3 d3 h3 g1

Threatening 4... $\text{w}f5+$. The game now finished **4 d7 wf5+ 0-1** as it is mate next move. However, the main line runs:

4 f5

Or 4 $\text{w}h4$ $\text{w}e1!$ 5 $\text{f}f3$ (White must retain control of f1) 5... $\text{w}e2$ with too many threats.

4...g5!

The key move. Black threatens mate in two with 5... $\text{w}h4+$! 6 $\text{g}xh4$ $\text{g}4\#$.

5 f6+ g6

Mate can no longer be prevented.

Puzzle 39

Black could have refuted Tal's sacrifice as follows:

1...fe8!!

The solution is for Black to sacrifice material to take over the initiative himself. White's pieces on the h-file are useful when it comes to generating threats against Black's king, but not so good when it comes to covering the back rank and the sensitive g2-square.

2 dxd8

Or 2 $\text{w}e3$ $\text{f}4$ 3 $\text{w}f2$ $\text{b}4!$ 4 $\text{d}xd8$ (4 $\text{d}d1$ $\text{d}xg2+$ 5 $\text{d}g1$ $\text{f}xe6!$ 6 $\text{d}xd8$ $\text{d}c5$ 7 $\text{w}xc5$ $\text{w}e1+$ 8 $\text{d}f2$ $\text{f}f1+$ 9 $\text{d}e2$ $\text{w}f3\#$) 4... $\text{bxc}3$ 5 $\text{bxc}3$ $\text{w}b1+$ 6 $\text{w}g1$ $\text{w}xg1+$ 7 $\text{d}xg1$ $\text{f}xd8$ 8 $\text{fxf}4$ $\text{d}c5+$ 9 $\text{f}dd4$ $\text{f}d6$ and wins.

2...fxc6

Despite White's extra rook, he has trouble meeting the threats posed by Black's very active pieces.

3 d3 g1

The toughest defence. Other lines:

1) 3 $\text{f}d1$ $\text{d}xg2+$ 4 $\text{d}g1$ $\text{d}c5+$ 5 $\text{f}hd4$ $\text{d}f1!$ 6 $\text{d}xf1$ $\text{w}f3+$ 7 $\text{d}g1$ $\text{d}xd4+$ 8 $\text{f}xd4$ $\text{w}e1\#$.

2) 3 $\text{d}e4$ $\text{d}xe4$ (Black is threatening 4... $\text{d}xg2+$) doesn't help White.

3) 3 $\text{d}b6$ $\text{w}e1+$ (best, but 3... $\text{d}f8$ is also very strong) 4 $\text{d}g1$ $\text{d}f8$ 5 $\text{w}f4$ $\text{d}c5$ 6 $\text{f}d8+$ $\text{d}f7$ 7 $\text{f}xh7+$ $\text{d}e6$ 8 $\text{w}d6+$ $\text{d}xd6$ 9 $\text{f}xb7$ $\text{d}xb7$ 10 $\text{w}e8+$