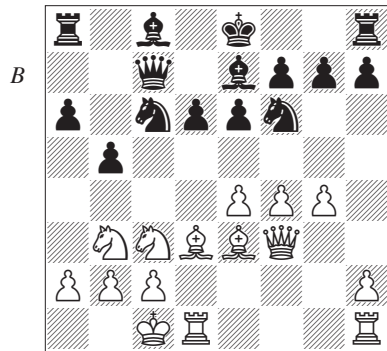


# Contents

Symbols	4
Introduction	5
1 White's 5th Move Deviations: The Medusa Variation	12
2 White's 6th Move Deviations: The Eros Variation	25
3 The Fianchetto 7 g3 Line: The Cyclops Variation	32
4 The 7 ♖g5 Line: The Poseidon Variation	37
5 The 7 a3 Line: The Hestia Variation	45
6 The 7 ♗e2 Line: The Hera Variation	56
7 The 7 ♕e2 Line: The Fates Variation	63
8 Black's 7th Move Deviations: The Teiresias Variation	66
9 The 9 a4 Line: The Hermes Variation	74
10 The 11 ♕d2 Line: The Apollo Variation	83
11 The 8 f4 Line: The Dionysus Variation	88
12 The 10 ♗e2 Line: The Athena Variation	95
13 The 10 ♗f3 Line: The Zeus Variation	102
14 Illustrative Games: Warrior's Guns – Mars	130
Index of Variations	143



Now:

- B1:** 12...♗b4 121  
**B2:** 12...♗d7 126

Other moves are not satisfactory:

a) 12...♗b7 13 ♖b1 ♗a5?! 14 ♗xa5 ♖xa5 15 g5 ♗d7 16 a3 0-0-0 17 ♖f2 ♖b8 18 ♗d4 e5 19 fxe5 dxe5 20 ♗a7+ ♖a8 21 ♗d5 ± King-Wirthensohn, Bern 1988.

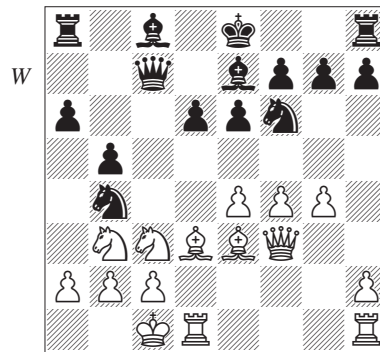
b) 12...0-0?! 13 g5 ♗d7 14 e5! dxe5 15 ♗e4 ♗b7 16 f5! g6 17 f6 ♗b4 18 h4 ♖fc8 19 h5 ♗f8 20 hxg6 fxg6 21 ♗d5 exd5 22 ♗xd5+ ♖h8 23 f7 ♖d6 24 ♖xh7+ ♗xh7 25 ♖h1 ♖g7 26 ♖xh7+ ♖f8 27 ♖f6 1-0 Hellers-Djukić, Malmö 1988.

c) 12...h6?! 13 ♖hg1 (13 ♖b1 ♗b7 14 ♖hg1 ♗d7 15 ♖f2 ♖c8 16 h4 ♗a5 17 g5 hxg5 18 hxg5 b4 19 ♗a4 ♗c4 20 g6 ♗xe3 21 gxf7+ ♖xf7 22 ♖xe3 ♗f6 23 e5 dxe5 24 ♗c4 ± Tiviakov-Tong Yuanming, Singapore U-18 Wch 1990) 13...♗d7 14 ♖f2! ♗b7 15 ♖b1 ♗f6?! (15...♗b4) 16 e5! dxe5 17 ♗xb5! 0-0 (17...axb5 18 ♗xb5 ♖b8 19 ♖d2! 0-0 20 g5!) 18 g5 hxg5 19 fxg5 +- Estrin-N.Kopylov, Omsk 1973.

**B1)**

**12...♗b4 (D)**

After this move Black is almost forced to castle kingside, entering a complicated battle.



**13 ♖b1**

White must avoid ♖xd3 in almost all cases of Black playing ...♗xd3. He should instead be prepared for cxd3, which reinforces the centre and avoids any future attack on the c2-pawn. Sometimes White can even use the c-file by playing ♖c1. So, Black would be more than fine after 13 g5?! ♗xd3+ 14 ♖xd3 (14 cxd3? b4) 14...♗d7.

**13...♗b7**

Or:

a) The premature 13...♗xd3?! 14 cxd3 b4 15 ♗e2 a5 16 g5 ♗d7 17 ♖c1 favoured White in Dussart-B.Knežević, Argente 1997.

b) 13...♗d7 14 g5 ♗b6?! is imprecise as after 15 a3! ♗xd3 16 cxd3 the ...b4 advance is difficult to achieve.

c) Some years ago 13...d5?! was popular, but this is actually a weak move and should be avoided:

c1) 14 e5?! ♟d7 15 ♚he1 (15 ♜f2 ♚b8 16 ♚hg1 ♟b6 17 a3 ♟c6 18 ♙c5 ♟c4 19 ♙xe7 ♜xe7 20 ♟e2 a5 21 ♟bd4 ♙d7 22 ♟xc6 ♙xc6 23 ♟d4 ♙d7 24 ♟b3 0-0 25 g5 g6 26 ♜c5 1/2-1/2 Matulović-Grivas, Ankara 1995 or 15 g5 ♟b6 16 ♜f2 ♟a4 17 ♟e2 ♙d7 18 ♟ed4 ♚c8 19 f5 exf5 20 ♙xf5 ♙xf5 21 ♜xf5 0-0 ∞ Tsarouhas-Grivas, Athens 1995) 15... ♟b6 16 f5 ♟a4 17 ♙d4 ♟c6 18 fxe6 ♟xc3+ 19 ♙xc3 ♙xe6 20 ♟d4 1/2-1/2 Hjartarson-Agdestein, Tilburg 1989.

c2) 14 ♙d4 dxe4 (14... ♟xd3 15 cxd3 0-0 16 h4 ♙b7 17 ♚c1 ♜d8 18 g5 ♟d7 19 h5 b4 20 ♟a4 e5 21 ♟ac5 dxe4 22 dxe4 ♙xc5 23 ♟xc5 exd4 24 ♟xb7 ♜b6 25 e5 b3 26 a3 ♚ac8 27 ♟d6 ♚cd8 28 g6 1-0 Plomann-M. Michna, e-mail 2000) 15 ♟xe4 ♙b7 16 ♙e5 ♜c8 17 ♙xf6 gxf6 18 f5 ♟xd3 19 ♚xd3 0-0 ± De Groot-Sobrano, corr. 1999.

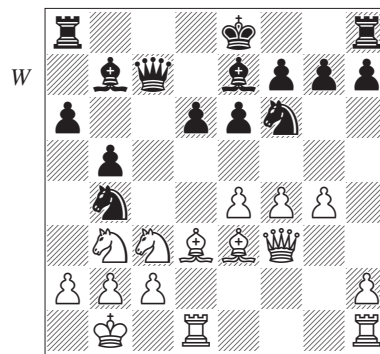
c3) 14 exd5! ♟bxd5 15 ♟xd5 ♟xd5 16 ♙e4 ♙b7 17 ♙c1 (17 ♙d4!) 17...0-0 18 g5 ♚ac8 19 f5 ± Vouldis-Grivas, Athens 1996.

c4) 14 g5! dxe4 (14... ♟xe4 15 ♟xe4 dxe4 16 ♙xe4 ♚b8 17 ♙d4 ♙b7 18 ♙xg7 ♚g8 19 ♙e5 ♙xe4 20 ♜xe4 ♜b7 21 ♜xh7 +- Angelis-Makris, Khania 1995) 15 ♟xe4 ♟fd5 16 ♙d4 ♜xf4 17 ♜h5 ♟xd3 18 cxd3 ♟e3 19 ♚de1 ♟f5 20 ♚hf1 ♜h4 21 ♜f3 0-0 22 ♙f2 ♜xh2 23 ♚h1 ♜c7 24 ♟d4 ♚d8 25 ♟xf5 exf5 26 ♚xh7 ♙b4 27 ♟f6+ 1-0 Cela-Grivas, Athens 1997.

d) A fair alternative is to try to keep the c8-bishop on its starting square, retaining control of the e6-square, with 13... ♚b8 14 g5 ♟d7 15 ♜h3 (15

a3?! ♟xd3 16 cxd3 b4 or 15 ♚c1 ♟b6 16 a3 ♟c6! with the idea of ...b4) 15... ♟b6, with ideas such as 16... ♟a4 or 16... ♟c4. As there are no examples, this idea should be tested in practice.

Now we return to 13... ♙b7 (D):



#### 14 g5 ♟d7

In practice there have been some games where Black had played ... ♙b7 earlier on instead of ... ♙e7, via the Najdorf move-order 1 e4 c5 2 ♟f3 d6 3 d4 cxd4 4 ♟xd4 ♟f6 5 ♟c3 a6 6 f4 e6 7 ♜f3 ♜b6 8 ♟b3 ♜c7 9 g4 b5 10 g5 ♟fd7 11 ♙e3 ♙b7 12 0-0-0 ♟c6 13 ♙d3 ♟c5. Now 14 ♟xc5 is ineffective due to the presence of the bishop on b7, so White preferred 14 ♟b1 ♟b4?! (14...0-0-0 15 ♜h3 ♟b8 16 g6? fxg6 17 ♟xc5 dxc5 18 ♜xe6 ♙c8! 19 ♜b3 c4 ♢) 15 ♜h3! ♟bxd3 16 cxd3 b4 (16... ♟xb3 17 axb3 g6 18 ♚c1 ♜e7 19 ♙d4 e5 20 fxe5 dxe5 21 ♟d5! ±) 17 ♟e2 ♟xd3 18 ♚xd3 ♙xe4 19 ♚d1 ♚c8 20 ♟a1 ♙f5 21 ♜f1 ♙xd3 22 ♚xd3 ♙e7 23 f5, and assumed the initiative in Kindermann-Stohl, Hamburg 1995.